

Digital Label Presses and Finishing Systems



FX1200
DIGITAL FINISHING SYSTEM



CX1200
COLOR LABEL PRESS



www.labelpower.com.au | sales@labelpower.com.au

Brisbane
(07) 3710 7000

Sydney
(02) 8011 3713

Melbourne
(03) 9016 9761

Digital Label Printing

Make new profits with the reliable, affordable Primera CX1200 Digital Label Press.

Digital full-color label printing has a wealth of significant benefits. But until now, digital label presses have been an expensive investment in both time and money. The industry needed a simpler, more cost-effective solution.

That's why Primera developed its new CX1200 Digital Label Press. CX1200 delivers all of the most important benefits of high-end digital color label presses but at a fraction of the cost.



Exceptional Print Quality

CX1200 utilizes one of the fastest and highest-resolution color laser engines available. With its incredible 2400 dpi print resolution, the labels you produce will be as good as – or even better than – labels produced on digital presses costing hundreds of thousands of dollars. Colors are bright and vibrant. Text is sharp. Bar codes and graphics are of the highest quality.

For precise color control, Pantone®-approved color support is included. Additional profiles for various substrates are available.

Impressive Performance

Print speed is 16.25 feet per minute (fpm). You can print up to 1250' at a time, which nominally equals a 12" diameter roll.

Advantages of Full-Color Digital Printing:

- » Faster turn-arounds
- » Shorter runs of just a few labels to tens of thousands
- » Elimination of plates, film and chemistry
- » Photographic-quality output
- » Opens up new markets
- » Gives you greater flexibility
- » Frees up other presses for longer runs
- » Significantly reduces set-up and make-ready with no clean up
- » Reduces waste

Perfect Rewinds

Primera's exclusive IntelliTorque™ tensioning control system continuously monitors tension across the web. It uses this feedback to apply variable torque on the rewind mandrel. You'll get perfect, tightly wound rolls every time. IntelliTorque is a first in this category of digital label presses.

Many Substrates

From pressure-sensitive papers to white and clear polyesters and more, CX1200 gives you maximum substrate flexibility. A wide range of approved matte, semi-gloss and high-gloss materials are available, allowing you to precisely match substrates to specific customer requirements.

www.labelpower.com.au | sales@labelpower.com.au

Brisbane
(07) 3710 7000

Sydney
(02) 8011 3713

Melbourne
(03) 9016 9761



CX1200

COLOR LABEL PRESS

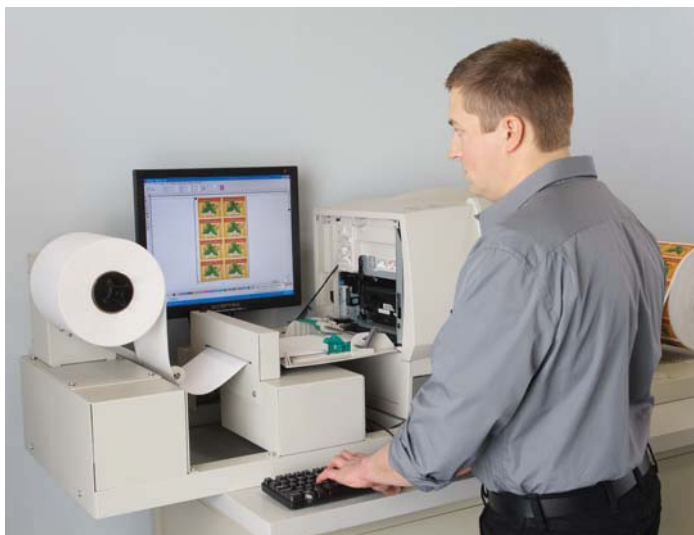
- 1 Powered unwind station with quick-change chuck
- 2 Flat screen LCD mounting bracket (LCD monitor and PC are not included)
- 3 Rotary cutter for perfect end-of-job cuts
- 4 Color laser print engine with best-in-class 2400 dpi print resolution
- 5 LCD display allows operator to monitor print engine alerts
- 6 Fuser
- 7 IntelliTorque Tensioning Control System –ensures consistently tight rewinds
- 8 Powered rewind station with quick-change chuck
- 9 Bench with built-in lockable storage optional

www.labelpower.com.au | sales@labelpower.com.au

Brisbane
(07) 3710 7000

Sydney
(02) 8011 3713

Melbourne
(03) 9016 9761



Simple Operation

From initial set-up through running big jobs, you'll find that CX1200 is one of the easiest pieces of equipment to operate that you own.

If you'd like additional help getting started, we offer free operator training at our offices in the USA, Europe and Asia Pacific.

Advanced Inks and Cartridges



Primera's micro-fine dry toner-based inks have been formulated for substrate flexibility, robustness and low running costs. Abrasion and UV resistance is among the best in the industry.

The four extra high-capacity toner cartridges are easily replaced in just seconds from the front of the unit. An integrated memory chip assigns each cartridge with a serial number and keeps track of precisely how much toner remains. This lets you to select exactly the right cartridges for the number of labels and the ink coverage you need to print. You'll never run out of ink in the middle of a job. You'll also utilize all of the toner in each cartridge, saving you money.



New Profit Opportunities

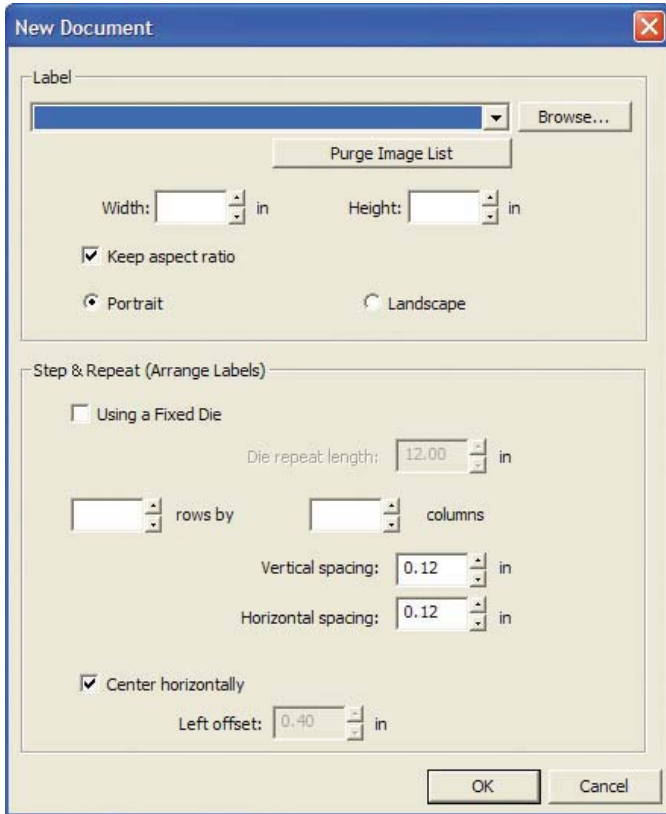
The CX1200 opens a whole new world of profit opportunities. Photo-quality, full-color labels are increasingly in demand. Even the smallest companies want to look big!

Digital printing is the clear answer to satisfy this growing need while making impressive new profits for you. Your biggest decision could be figuring out what to do with all of the extra money you can make.

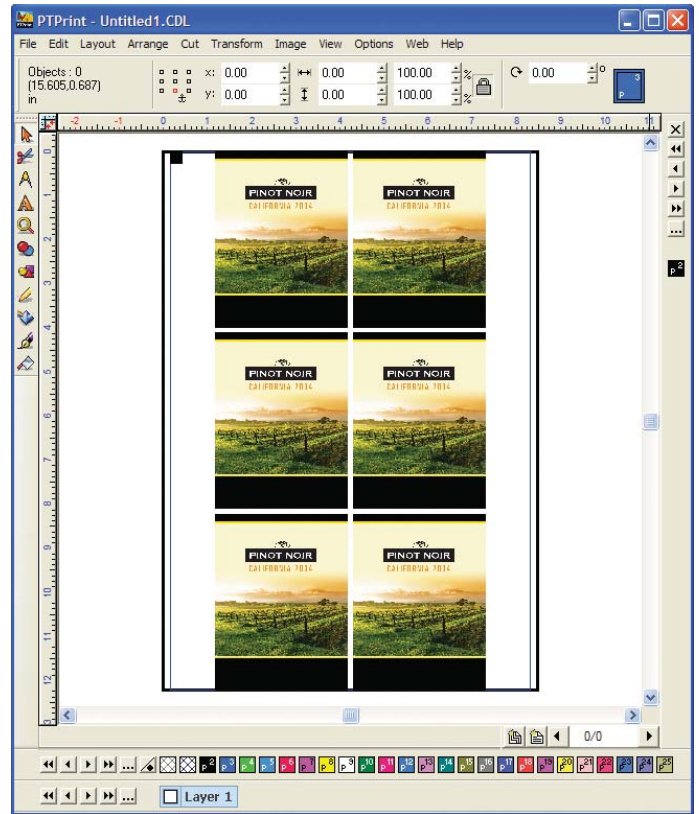
Software that Matches your Workflow

CX1200 comes equipped with Primera's PTPrint™ 8.0 for Windows® production software. This powerful yet easy-to-use software works the way you do, helping you to run your jobs in the most efficient manner possible. Features include:

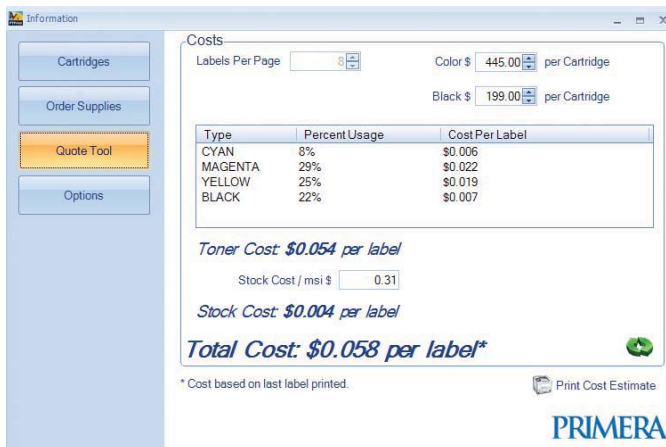
- » Importing of virtually all popular file formats: .jpg, .png, .eps, .tif, .bmp, .pdf, .pcx, .pcd and more
- » Instant customer proofs
- » Estimating job costs
- » Calculating toner and substrate use through the PTPrint Status Monitor utility
- » Step-and-repeat
- » Printing of timing marks for use with most off-line finishing equipment



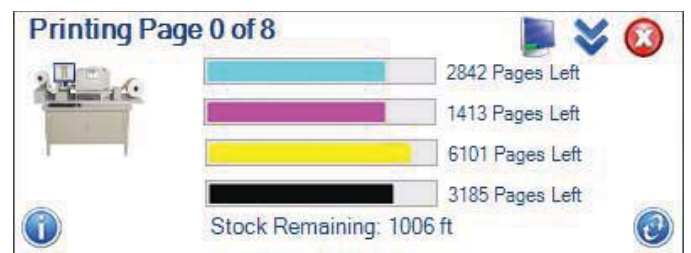
Import and "step-and-repeat"



Main operating screen



Job costing



Status monitor

The Best Digital Label Printing Solution

Whether you already own a high-end digital label press or are just getting started, CX1200 is the best short to mid-run digital label printing solution you'll find at anywhere near its price.

www.labelpower.com.au | sales@labelpower.com.au

Brisbane
(07) 3710 7000

Sydney
(02) 8011 3713

Melbourne
(03) 9016 9761

Digital Label Finishing

Digital Label Finishing Has Never Been This Fast, Easy and Affordable!

Until now, digital label finishing has been expensive. Complicated. And not particularly well-refined. But no longer.

Primera's FX1200 Digital Finishing System is here.

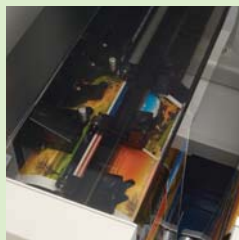
This innovative new machine is ready to meet the demands of converters and manufacturers who need reliable, professional-grade finishing equipment to complete their digital label production. FX1200 is an "all-in-one" off-line solution that produces rolls of finished labels produced by a variety of narrow-web output devices.



With FX1200, you'll be able to quickly and easily perform all of these label finishing steps in a single, integrated and automated process:



Laminating



Digital die-cutting



Removal of waste matrix



Slitting



Rewinding to finished rolls

www.labelpower.com.au | sales@labelpower.com.au

Brisbane
(07) 3710 7000

Sydney
(02) 8011 3713

Melbourne
(03) 9016 9761

Touch Screen Controls

All set-up and operation is controlled through an integrated touch screen PC. Most jobs take only a few minutes to set up and start running. You can easily adjust job parameters "on-the-fly" due to the significant built-in processing power and on-board memory – a unique feature in this category of digital finishing systems. The wide-screen color LCD display is easily visible in many different lighting conditions.

Cut Any Size or Shape without Dies

Instead of hard-tooled or flexible steel dies, FX1200 utilizes digitally-controlled tungsten carbide steel knife blades. With FX1200 you'll never have to buy a die or wait for it to be made and delivered. Your turnarounds will be faster and the time and cost savings are significant.

QuadraCut™ by Primera

Finishing speeds of up to 20 FPM (6.1 meters per minute) are accomplished with Primera's exclusive QuadraCut™ technology (patent pending).

QuadraCut uses up to four knife blades at a time across the web. This feature dramatically increases throughput compared to systems that have just a single blade.

You can cut virtually any size or shape from various pressure-sensitive substrates, including matte and gloss paper, polyester, vinyl, polypropylene, BOPP and more.

Precise re-registration to pre-printed images is accomplished with dual two-zone timing mark sensors.

A Complete Digital Solution

FX1200 is the perfect companion to a variety of narrow-web digital output devices, including Primera's best-selling CX1200 Digital Color Label Press (color laser technology) and LX900 Color Label Printer (inkjet technology).

With Primera's digital printing and finishing equipment, you get a complete digital label printing and finishing solution from a single vendor at a new, breakthrough price.

Primera and the Environment



Primera strives to be an environmentally responsible provider of state-of-the-art digital label printing technology. As such, cartridge recycling is provided at no charge, throughout the world, for the life of the press. The result is less solid waste with fewer resources consumed. All of our products are compliant with ROHS and WEEE standards.

Innovative Technology from and Industry Leader

Primera's thirty-three year history of designing and manufacturing specialty color printers assures you that your investment will be backed by a strong, highly-respected USA-based company with offices around the world. Over a million printers have been built and sold in more than 85 countries.

Support to Keep You Up and Running

Primera's industry-leading technical support personnel are here to help keep your press up and running. Technicians are available by phone and email across the globe and in most major languages. Installation, training and repair programs are also available. In selected geographies, on-site scheduled maintenance and service is also available.

All regularly-scheduled maintenance can easily be performed by your own personnel. Besides toner cartridges, the only other consumables are the Image Transfer Unit (ITU), fuser and waste toner container.



www.labelpower.com.au | sales@labelpower.com.au

Brisbane
(07) 3710 7000

Sydney
(02) 8011 3713

Melbourne
(03) 9016 9761

CX1200 COLOR LABEL PRESS

Print speed:	3.25"/second (83mm/second); 16.25 feet/minute (5 meters/minute)
Print method:	Color laser
Display:	4-line, 160 x 64 pixel, backlit gray-scale display
Printer processor:	800 / 133 MHz
Media width:	8.5" (216mm)
Print width:	Up to 8.00" (203mm)
Print length:	Up to 1250 feet (381 meters) per 12" (305mm) roll of self-adhesive label stock (includes face sheet, adhesive and liner)
Substrate types:	Self-adhesive paper label stock and approved films
Printing quality modes:	1200 dpi x 600 dpi 1200 dpi x 1200 dpi 2400 x 600 dpi
Ink supplies:	CMYK 4-color printing (Cyan, Magenta, Yellow, Black); 15,000 page extra high yield cartridges; (Rated according to ISO/IEC 19798 guidelines)
Software:	PTPrint™ 8.0 RIP Software for Windows®; Pantone-approved color support; Easy to use graphical user interface
Input system:	Input roll maximum diameter: 12" (305mm); Core inside diameter: 3" (76.2mm); IntelliTorque Tension control system with automatic paper feed; Maximum input roll weight: 45 lbs. (20.4 kg)
Output system:	Output roll maximum diameter: 12" (305mm); Core inside diameter 3" (76.2mm); IntelliTorque Tension control system; Maximum output roll weight: 45 lbs. (20.4 kg)
Operating system:	Windows XP/Vista, 32-Bit
System recommendations:	<ul style="list-style-type: none"> » Intel® Pentium®-based PC or compatible, 2 GHz processor or higher » 2GB RAM or higher » 50GB or more free hard drive space » VGA video display of 1024x768 or higher » Available 100/1000 Ethernet port
Dimensions:	Without bench: 76"W x 22"H x 22"D (193cmW x 56cmH x 56cmD) With bench: 76"W x 56.625"H x 30"D (193cmW x 143.8cmH x 76cmD)
Weight:	Without bench: Approximately 256 lbs. (116 kg) With bench: Approximately 456 lbs. (207 kg)
Operating environment:	Temperature: 16 to 32°C (60 to 90°F) Humidity: 20 to 60% relative humidity Altitude: 0 – 2000 meters (6,560 feet)
Power:	110-127 VAC, 50/60 Hz @ 7.5A 220-240 VAC, 50/60 Hz @ 3.5A
Certifications:	CSA, ICES Class A, BSMI Class A, VCCI Class A, FCC Class A, UL 60950-1, IEC 60320-1, CE Class A, CB IEC 60950-1, IEC 60825-1, GS (TÜV), SEMKO, UL AR, CS, TÜV Rh, C-tick mark Class A
Warranty:	One year parts and labor. Usage limitations may apply.
Options:	Extended warranty Bench with built-in lockable storage

FX1200 DIGITAL FINISHING SYSTEM

Input roll max. diameter:	12" (305mm)
Output roll max. diameter:	12" (305mm)
Minimum web width:	6" (152mm) (Not Currently Available)
Maximum web width:	8.5" (216mm)
Maximum die cutting width:	8" (203mm)
Minimum slitting width:	1" (25.4mm)
Minimum label length:	0.25" (6.35mm)
Maximum label length:	24" (610mm)
Throughput speed:	Up to 4" (102 mm) per second or 20 FPM (6.1m per minute)
Controls:	15.6" (diagonal measure) LCD touch screen, 16:9 wide panel, 1366 x 768 pixels; emergency stop switch
Number of cutting knives:	1 to 4
Number of slitting blades:	1 to 7
Cutting technology:	Tungsten carbide pivoting knife(s)
Cut file protocol:	HPGL
Optical sensing:	Dual two-zone
Cut speed (max. diagonal):	Up to 113" (287cm) per second when using four knife blades
Processor:	Intel® Atom™ 330 1.6 GHz
Memory:	1 GB DDR2
On-board storage:	160GB SATA 2.5" HD
Data interfaces:	USB 2.0, 10/100/Gigabit Ethernet, Wireless 802.11 b/g/n, USB memory stick
Dimensions:	78"W x 30"D x 56"H (198cmW x 76.2cmD x 142cmH)
Weight (estimated):	498 lbs. (226 kg)
Power requirements:	100-240VAC, 300 watts
Agency certifications:	UL, UL-C, CE, FCC Class A
Warranty:	One year parts and labor. Usage limitations may apply.
Options:	Lamination Liner Waste Mandrel Extended warranty



©2010 Primera Technology, Inc. All rights reserved. QuadraCut is a trademark and Primera is a registered trademark of Primera Technology, Inc. Windows is a registered trademark of Microsoft Corporation. Mac is a trademark of Apple Computer, Inc. registered in the U.S. and other countries. All other trademarks are the property of their respective companies. Specifications are subject to change without notice. All data and company names used in sample prints are fictitious. Patents pending. Product warranty may be different in Europe and Asia.

www.labelpower.com.au | sales@labelpower.com.au

Brisbane
(07) 3710 7000

Sydney
(02) 8011 3713

Melbourne
(03) 9016 9761